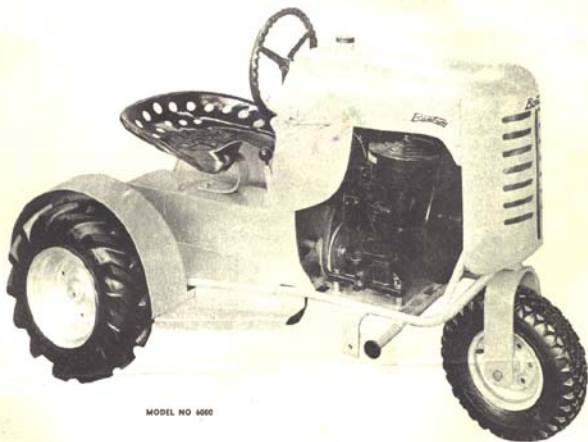


BANTAM

LAWN AND GARDEN RIDING
TRACTORS

INSTRUCTION MANUAL AND PARTS LIST



MODEL NO 6000

MODEL NO. 4000—4 H.P.

MODEL NO 6000—6.3 H.P.

MODEL NO. 9000—9.6 H.P.

Net Price \$1.50

bantamtractor.com

FALLS PRODUCTS, INC.

• BANTAM TRACTOR DIVISION

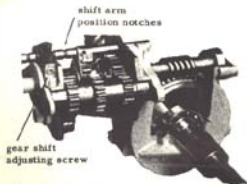
Genoa, Illinois

OPERATING INSTRUCTIONS FOR ALL MODELS

Your Bantam Tractor and attachments are the proven product of careful engineering and practical application. This manual is intended to help you get the greatest utility and the most enjoyment from your Bantam. Read it, and keep it to refer to whenever you have a question about operation or maintenance.

Transmission and Differential The automotive type transmission and differential are specially designed and manufactured for the Bantam Tractors. Gears are hob cut from case hardened steel, and run immersed in oil-tight gear boxes. Lubricating plugs are located on the end of differential case and on the left of transmission box. These plugs are to be used for both filling and draining. Keep gear boxes filled to plug level with automobile differential grease; check regularly. Drain and refill differential once a year.

Gear shift lever is located just forward of the seat with positions for the three gears marked. There are two forward gears and reverse. Turn down the hand throttle when shifting gears, and double clutch when necessary. (If gears do not immediately mesh, quickly throw clutch in and out, then shift gears again.)



Rear Transmission and Differential

A gear shift adjustment is provided to insure positive gear shifting and locking. This adjustment mechanism includes an Allen set-screw, spring and bullet plunger which engages in the position notches of the shifting arm. The adjusting screw is located in the forward end of the transmission case, near the top on the left side. When spring becomes set and loosens, the gears may slip out of engagement under a heavy load or as the result of severe vibration. If this occurs, give the set-screw one or two small turns to tighten the spring pressure.

The transmission and differential of your Bantam Tractor are guaranteed for one year, and with proper care, will give you many years of trouble free performance.

A Briggs and Stratton Engine instruction manual was delivered with your Bantam Tractor. Read carefully these operating and maintenance instructions so that you will know how to get the greatest efficiency from your Bantam's power plant. Engine warranty will not apply if manufacturer's instructions are not followed.

This is a four-cycle engine which has an independent crankcase for oil the same as an automobile--do not add oil to the gasoline. Fill the crankcase with SAE 20 oil and check regularly. Fill the fuel tank with a good grade of regular gasoline.

When adding or changing oil in the air cleaner, the filter assembly must be dismounted from the engine due to lack of working space under the tractor hood. Unscrew cover wing-nut from the air cleaner stud. Remove the bolt which attaches the air cleaner pipe strap to the lower part of carburetor body. The air cleaner stud is threaded into this strap, so both must be removed together.

Rear Axle Bearings require no lubrication. On the 3 and 5 h. p. tractors these bearings are made of Oilite self oiling bronze. On the 8 h. p. tractor sealed bearings are used.

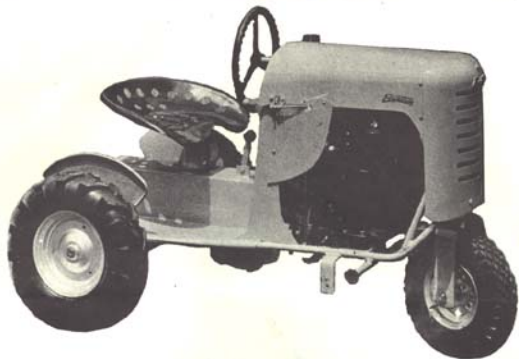
Steering Gears should be oiled occasionally through the oil hole at the top of grill casting where marked.

Wheels and Tires. Keep tires inflated to 28 lb. pressure. Give special attention to front tire when tractor is equipped with a front mount attachment. Grease the front wheel regularly through alemite filling in wheel hub.

Propeller Shaft. Grease regularly the alemite fittings in the universal joints of the propeller shaft assembly. There is one universal joint in this assembly of the 3 and 5 h. p. tractors, and two in the 8 h. p. tractor.

3 H.P. and 5 H.P. TRACTORS

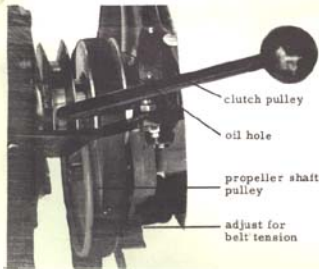
Clutch. The 3 and 5 h. p. tractors are equipped with the "Ball-Lok" V-belt clutch with hand lever control, mounted on the engine crankshaft. It is a heavy duty clutch with no friction parts to adjust or replace--and is safe against false starts. This clutch can be "slipped" when starting heavy loads, but for long belt life do not ride clutch. Pull back on shifting lever to engage clutch; push forward to disengage. When engag-



MODEL NO. 4000—4 H.P.

ing clutch apply a steady pressure until you feel the clutch lock into place. Due to the locking feature you have complete control and feel of your starting load at all times.

Before starting the engine, oil the clutch shifting collar. Disengage clutch and turn over the the starter crank pulley by hand until the oil hole is exposed in the collar immediately to the rear of the clutch belt pulley. Squirt some SAE 20 oil in the oil hole and move the clutch handle back and forth to work in the oil. Oil the shifting collar each time before the tractor is used.



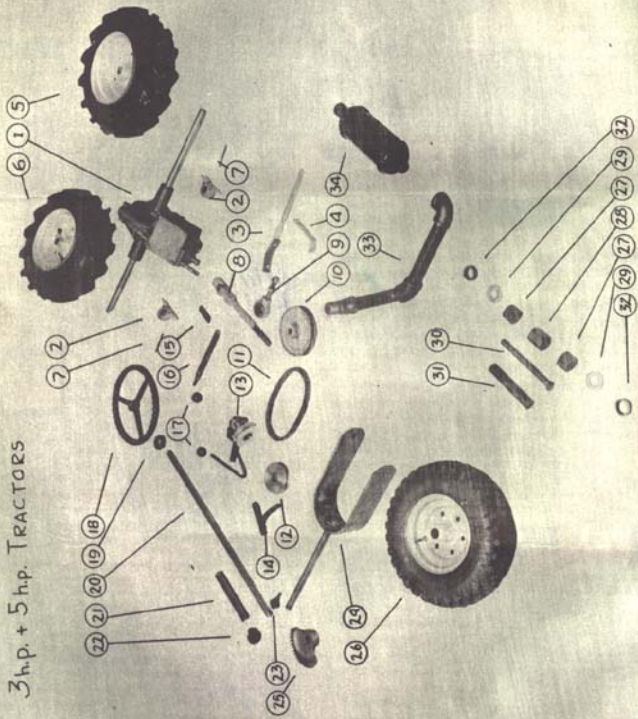
Y-Belt Clutch and Propeller Pulley

This clutch needs no adjustment. Efficient power transmission is obtained by correct belt tension and position of drive pulley. Belt is adjusted correctly when set for a total play of $1/4$ to $3/8$ in. when tested with the fingers. Too loose a belt will cause slippage, resulting in power loss and excessive belt wear. A loose belt will also cause the clutch to vibrate out of engagement. Too tight a belt will make shifting difficult, and may keep clutch from engaging properly. Belt tension is adjusted by running the jam nuts up or down on the stud of the propeller shaft bearing hanger when the clutch is engaged. The correct position of the drive pulley is directly below the clutch pulley; that is, the center of both pulleys should be in vertical alignment.

For a power test drive tractor up to a wall, place front wheel against the wall, shift into low and engage clutch. When all adjustments are correct the wheels will turn over, grinding into the earth without the clutch slipping or disengaging. If surface is paved, use high gear for this test so as not to grind off too much rubber from the tires.

Brakes. Upon disengaging clutch in either forward or reverse gears, an immediate braking action is developed which makes use of the manual brakes generally unnecessary. The 3 and 5 h. p. tractors are equipped with a friction type emergency brake. The foot lever control is located on the left side of tractor.

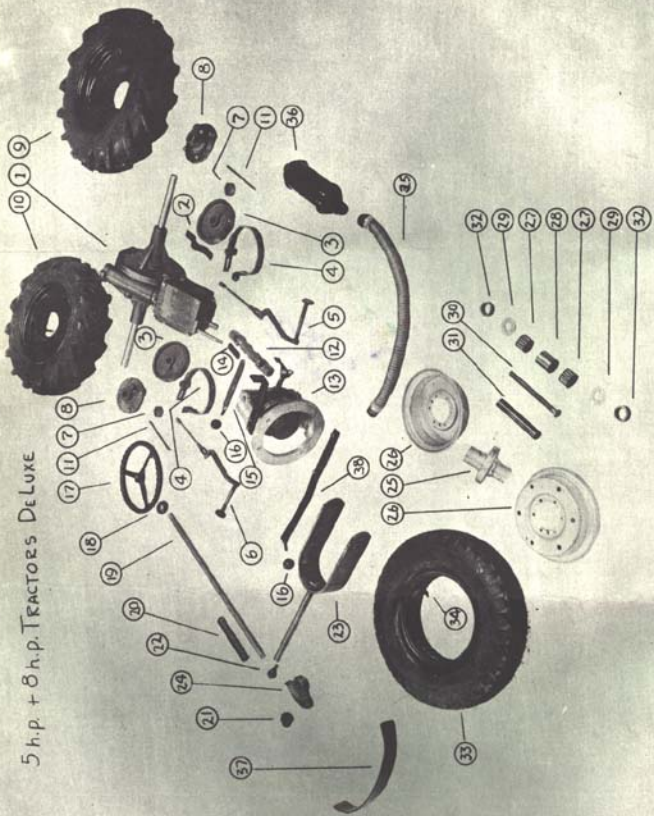
3 h.p. + 5 h.p. TRACTORS



3 H.P. and 5 H.P. TRACTORS

LIST NO. 1	5 H. P. Std.	3 H. P. Std.
	<u>Tractor</u> <u>Part No.</u>	<u>Tractor</u> <u>Part No.</u>
1. Assy. -Transm. & Diff. (See Parts List No. 3)	5300	5300
2. Rear Axle Bearing (2 reqd.)	5870	5870
3. Brake Lever	5110	5110
4. Mtg. Brkt. -Brake Lever	5004	5004
5. Assy. -Rear Wheel & Tire-LH	5030	3030
6. Assy. -Rear Wheel & Tire-RH	5040	3040
Rear Wheel (not pictured)	5050	3050
Rear Tire (not pictured)	5031	3031
Rear Tube (not pictured)	5032	3032
7. Rear Axle Key	5033	5033
8. Propellor Shaft ✓	5580	5580
9. Propellor Shaft Brg.	5640	5640
10. Pulley-Propellor Shaft ✓	5573	5573
11. V Belt-Engine to Transm.	5051	5051
12. Pulley-Accessories Drive	5061	3061
13. Assy-Clutch, Shift & Brkts. (See Parts List No. 4)	5730	3730
14. Mtg. Brkt. -Clutch Shift Lever	5710	5710
15. Transm. Shifting Linkage	5652	5652
16. Transm. Shift Lever	5650	5650
17. Shift Knob	5025	5025
18. Steering Wheel	5035	5035
19. Steering Wheel Fiber Washer	5504	5504
20. Steering Shaft	5503	5503
21. Steering Shaft Spring	5506	5506
22. Steering Gear Pinion	5502	5502
23. Steering Shaft Frt. Brg.	5520	5520
24. Wheel Fork	5510	5510
25. Steering Gear Segment	5501	5501
26. Assy. -Front Wheel & Tire	5010	5010
Front Wheel (not pictured)	5020	5020
Front Tire (not pictured)	5011	5011
Front Tube (not pictured)	5012	5012
27. Front Wheel Bearings (2 reqd.)	5015	5015
28. Front Wheel Brg. Spacer	5001	5001
29. Front Wheel Brg. Retainer (2 reqd.)	5016	5016
30. Front Wheel Axle	5007	5007
31. Front Wheel Axle Shaft	5002	5002
32. Front Wheel Fork Spacer (2 reqd.)	5003	5003
33. Exhaust Tube	5070	3070
34. Muffler	5810	3810

5 h.p. + 8 h.p. Tractors Deluxe



5 H.P. and 8 H.P. DELUXE TRACTORS

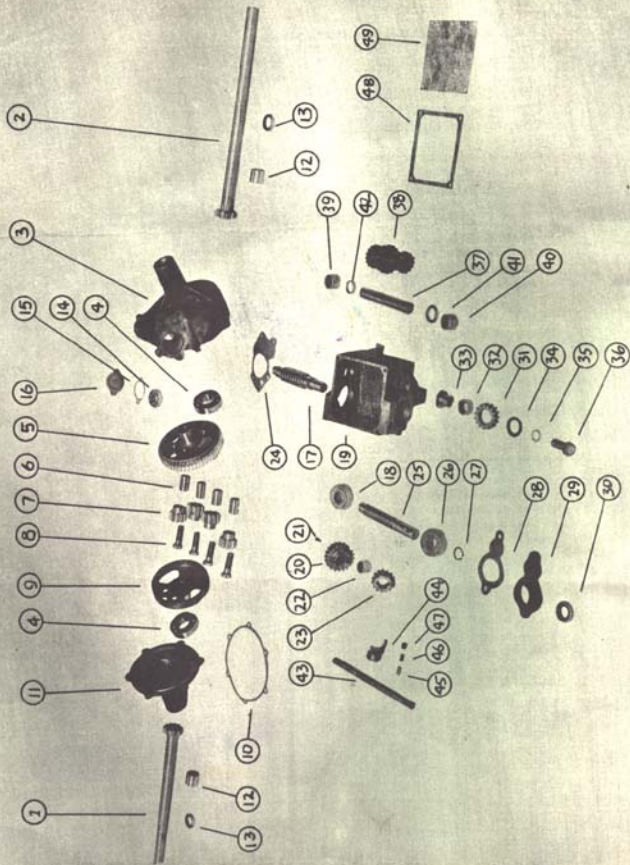
LIST NO. 2

1.	Assy.-Transm. & Diff. (See Parts List No. 3)	8300
2.	Transmission Mtg. Strap (2 reqd.)	8658
3.	Brake Drum	8905
4.	Brake Band	8910
5.	Brake Pedal & Adj. Rod - LH	8920
6.	Brake Pedal & Adj. Rod - RH	8930
7.	Rear Axle Spacer	8906
8.	Rear Wheel Hub (w/Mtg. Bolts)	8970
9.	Assy.-Rear Wheel & Tire - LH	8030
10.	Assy.-Rear Wheel & Tire - RH	8040
	Rear Wheel (not pictured)	8050
	Rear Tire (not pictured)	8031
	Rear Tube (not pictured)	8032
11.	Rear Axle Key	8907
12.	Propellor Shaft	8060
13.	Assy.-Clutch, Hsg. & Yoke (See Parts List No. 4)	8730
14.	Transm. Shifting Linkage	8657
15.	Transm. Shift Lever	8150
16.	Shift Knob	5025
17.	Steering Wheel	5035
18.	Steering Shaft Fiber Washer	5504
19.	Steering Shaft	8503
20.	Steering Shaft Spring	5506
21.	Steering Gear Pinion	5502
22.	Steering Shaft frt. Brg.	5520
23.	Wheel Fork	8510
24.	Steering Gear Segment	5501
	Assy.-Front Wheel & Tire (not pictured)	8010
25.	Front Wheel Hub	8014
26.	Front Wheel Disc Set (2 Discs & Hdwe.)	8015
27.	Front Wheel Bearing (2 reqd.)	5015
28.	Front Wheel Brg. Spacer	5001
29.	Front Wheel Brg. Retainer (2 reqd.)	5016
30.	Front Wheel Axle	8004
31.	Front Wheel Axle Shaft	8002
32.	Front Wheel Fork Spacer (4 reqd.)	5003
33.	Front Tire	8011
34.	Front Tube	8012
35.	Exhaust Tube	8070
36.	Muffler	8080
37.	Front Bumper	8065
38.	Shift Arm	8720

8 H.P. and 5 H.P.

Deluxe TractorsPart No.

TRANSMISSIONS



TRANSMISSIONS

LIST NO. 3

8 H. P. & 5 H. P.

5 H. P. & 3 H. P.

	8 H. P. & 5 H. P.		5 H. P. & 3 H. P.	
	Deluxe Tractors	Part No.	Standard Tractors	Part No.
1. Rear Axle - RH	8350		5350	
2. Rear Axle - LH	8350		5330	
3. Differential Housing	8355		5355	
4. Rear Axle Main Bearing	8357		5357	
5. Differential Worm Drive Gear	8341		5341	
6. Spider Gear Bushing (4 to set)	8346		5346	
7. Spider Gear (4 to set)	8345		5345	
8. Spider Gear Bolt (4 to set)	8353		5353	
9. Differential Drive Gear Cover	8356		5356	
10. Gasket-Differential Hsg.	8372		5372	
11. Side Cover-Differential Hsg.	8371		5371	
12. Rear Axle Sleeve Bearing	8360		5354	
13. Oil Seal-Rear Axle	8361		5361	
14. Worm Shaft Bearing-Rear	8366		5366	
15. Gasket-Worm Shaft Brg. Cap	8369		5369	
16. Worm Shaft Bear Cap	8368		5368	
17. Worm Drive Shaft	8365		5365	
18. Worm Shaft Bearing-Front	8232		8232	
19. Transmission Housing	8381		5381	
20. Main Drive Gear	8305		5305	
21. Main Drive Gear Key	8309		5309	
22. Main Drive Gear Bearing	8306		8306	
23. Sliding Gear	8315		5315	
24. Gasket-Transm. to Diff.	8301		5301	
25. Splined Drive Shaft	8311		5311	
26. Spline Shaft Bearing-Front	8232		8232	
27. Bearing Retainer Ring	8312		8312	
28. Gasket-Transm. frt. Brg. Cap	8319		5319	
29. Transmission Frt. Brg. Cap	8318		5318	
30. Oil Seal-Splined Shaft - Frt.	8316		8316	
31. Reverse Idler Gear	8387		5387	
32. Reverse Idler Gear Bearing	8388		8388	
33. Reverse Idler Gear Stud	--		5386	
34. Spacer-Reverse Idler (2 reqd.)	8389		5389	
35. Gasket-Reverse Idler	8384		5384	
36. Reverse Idler Gear Shaft	8386		5385	
37. Cluster Gear Shaft	8391		5391	
38. Cluster Gear	8395		5395	
39. Cluster Gear Bearing-Rear	8382		8382	
40. Cluster Gear Bearing-Front	8366		8382	
41. Spacer-Cluster Gear-Front	8393		5393	
42. Spacer-Cluster Gear - Rear	8394		5394	
43. Shifter Shaft	8321		5321	
44. Shifter Yoke	8322		5322	
45. Plunger Pin	8323		8323	
46. Plunger Pin Spring	8324		8324	
47. Retaining Screw-Plunger Pin	8325		8325	
48. Gasket-Transm. Cover	8328		5328	
49. Transm. Hsg. Cover	8327		5327	

Std. Hardware Used: (not pictured)

Drain Plug

3/4" Pipe Plug

1/4" Pipe Plug

Diff. Side Cover Bolts (6 reqd.)

1/4"-20x3/4" HH Bolt

1/4"-20x3/4" HH Bolt

Worm Brg. Cap Bolts(2 reqd.)

1/4"-20x3/4" HH Bolt

1/4"-20x3/4" HH Bolt

Oil Filling Fittings

3/4" Pipe Fittings

--

Transm. to Diff. Bolts(4 reqd.)

5/16"-18x1" HH Bolt

5/16"-18x1" HH Bolt

Transm. Brg. Cap Bolts(2 reqd.)

1/4"-20x3/4" HH Bolt

1/4"-20x3/4" HH Bolt

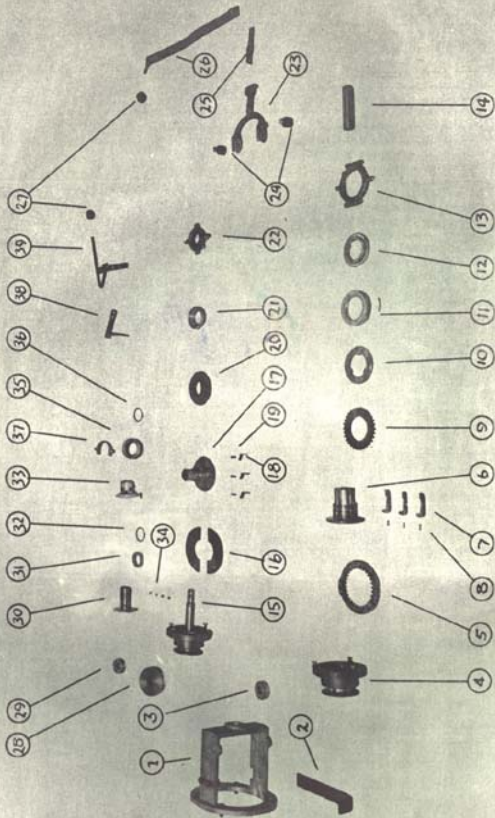
Transm. Cover Bolts(4 reqd.)

1/4"-20x3/4" HH Bolt

1/4"-20x3/4" HH Bolt

(Parts requiring set screws are furnished with those set screws assembled.)

CLUTCHES - ALL TRACTORS



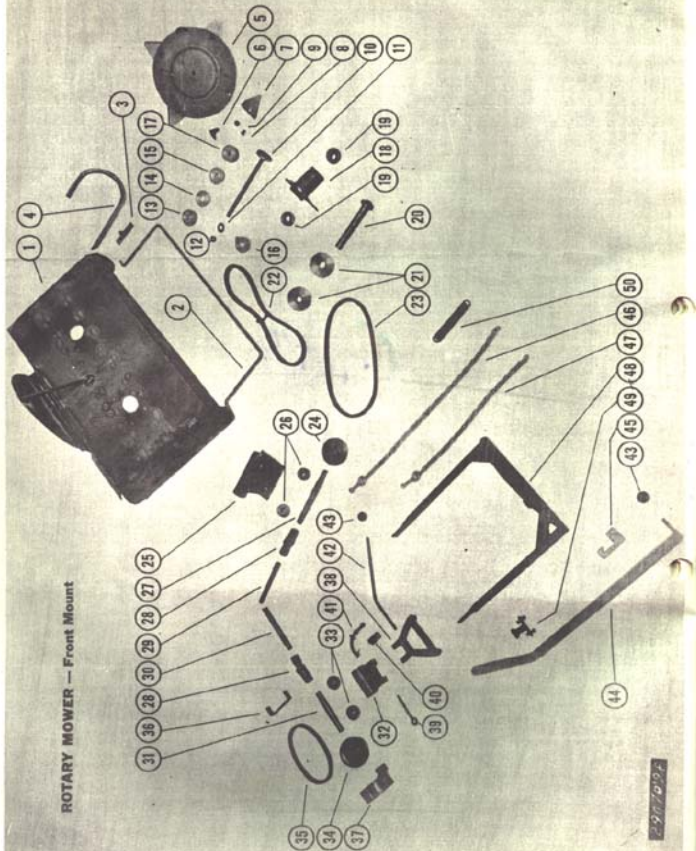
CLUTCHES

LIST NO. 4

	8 H. P. & 5 H. P.		5 H. P. & 3 H. P.	
	Deluxe Tractors		Standard Tractors	
	Part No.		Part No.	
Assembly, Clutch (3HP)	--		3740	
Assembly, Clutch (5HP)	--		5740	
Assy., Clutch (Items 4 to 14)	8240		--	
Assy., Clutch (Items 15 to 22)	8270		--	
1. Clutch Housing	8231		--	
2. Mtg. Brkt. -Shift Lever	8055		--	
3. Clutch Hsg. Rear Bearing (Items 4 to 14, inc. will service clutches on deluxe tractors bearing serial numbers to 2355259, inclusive)	8232		--	
4. Clutch Driven Pulley & Bearing	8140		--	
Clutch Driven Pulley Bearing *	5642		--	
5. Clutch Driven Ring	8241		--	
6. Clutch Body	8242		--	
7. Clutch Finger (6 reqd.)	8243		--	
8. Return Spring (3 reqd.)	8244		--	
9. Clutch Drive Ring	8245		--	
10. Clutch Drive Plate	8246		--	
11. Clutch Adjusting Ring	8247		--	
12. Clutch Shifter Ring Body	8248		--	
13. Clutch Shifter Ring	8249		--	
14. Clutch Driven Shaft (Items 15 to 22 inc. will service clutches on deluxe tractors bearing serial numbers 2355260 and higher)	8052		--	
15. Clutch Driven Pulley & Shaft	8280		--	
16. Liner Member (2 reqd.)	8271		--	
17. Clutch Body	8272		--	
18. Clutch Finger (3 reqd.)	8273		--	
19. Return Spring (3 reqd.)	8274		--	
20. Clutch Plate	8275		--	
21. Clutch Adjusting Ring	8276		--	
22. Clutch Shifter Ring	8277		--	
23. Shifting Yoke	8054		--	
24. Yoke Retainer Sleeve (2 reqd.)	8053		--	
25. Yoke Linkage	8058		--	
26. Shift Arm	8720		--	
27. Shift Knob	5025		--	
28. Pulley-Accessories Drive - 5 H. P.	--		5061	
29. Pulley-Accessories Drive - 3 H. P. (Items 30 to 39, inc. will service clutches on 5 H. P. and 3 H. P. standard tractors.)	--		3061	
30. Clutch Body & Pulley Mem. -Rr. (5HP)	--		5741	
Clutch Body & Pulley Mem. -Rr. (3HP)*	--		3741	
31. Clutch Body Bronze Collar	--		5742	
32. Retainer-Clutch Body Collar	--		5743	
33. Clutch Body & Pulley Mem. -Frt.	--		5744	
34. Clutch Locking Ball (4 reqd.)	--		5745	
35. Clutch Shifting Sleeve	--		5746	
36. Retainer-Clutch Shifting Sleeve	--		5747	
37. Clutch Shifting Collar	--		5748	
38. Mtg. Brkt. -Clutch Shift Lever	--		5710	
39. Clutch shifting Yoke & Lever V Belt-Clutch to Transm. *	--		5720 5051	

* This Item is not pictured.

ROTARY MOWER — Front Mount



2-907019A

ROTARY MOWER — Front Mount

	34" Part #20000	40" Part #25000
1. Assy. Deck	20500	25500
2. Front Guard	20303	25393
3. Mtg. Brkt. Frt. Guard & Runner (2 req.)	20390	
4. Runner - L.H.	20410	
* Runner - R.H.	20420	
5. Assy. - Cutter Disc & Cutters (2 reqd.)	20490	25490
6. Vertical Cutter (4 reqd.)	20495	
7. Flat Cutter (8 reqd.)	20489	
8. Cutter Bolt (8 reqd.)	20488	
9. Nut for Cutter Bolt (8 reqd.)	20487	
10. Drawbar (2 reqd.)	20380	
11. Spacer Retainer (2 reqd.)	20496	
12. Drawbar Nut (2 reqd.)	20498	
13. Cutter Height Adj. Spacer 3/4"	20493	
14. Cutter Height Adj. Spacer 1/4"	20491	
15. Cutter Height Adj. Spacer LH 7/16"	20497	
16. Cutter Height Adj. Spacer RH 1/2"	20492	
17. Cutter Height Adj. Spacer 1"	20494	
* Assy. Cutter Shaft & Brg. Hsg. LH	20440	
* Assy. Cutter Shaft & Brg. Hsg. RH	20450	
18. Cutter Shaft Brg. Hsg. (2 reqd.)	20451	
19. Cutter Shaft Brg. Hsg. (4 reqd.)	20452	
20. Cutter Drive Shaft (2 reqd.)	20430	
21. Cutter Drive Pulley (2 LH & 1 RH reqd.)	20453	
22. V Belt - Cutter Drive Pulleys	20472	
23. V Belt - PTO to Cutter Drive	20471	
* Assy. Power Take-Off	20470	25470
24. PTO Drive Pulley	20473	
25. PTO Brg. Hsg.	20480	
26. PTO Shaft Bearing	8232	
27. PTO Drive Shaft	20474	
28. Universal Joint	5590	
29. PTO Drive Shaft Extension - Male	20460	25460
* Assy. Belt Tightener Clutch & Mtg.	20800	25800
30. Clutch Drive Shaft Extension - Female	20890	25890
31. Clutch Drive Shaft	20885	
32. Belt Tightener Clutch Shft. Brg. Hsg.	20880	
33. Clutch Shaft Brg.	8232	
34. Clutch Drive Pulley	20870	
35. V Belt - Clutch to Engine Pulley	20104	25104
36. Belt Guide	20101	25101
37. Clutch Drive Belt Guard	20860	
38. Tractor Mtg. Brkt.	20801	25810
39. Hinge Pin	20850	
40. Shift Linkage Cam	20803	
41. Cam Action Bolt	20802	
42. Clutch Shifting Rod	20804	
43. Shift Knob	5025	
44. Mower Lifting Handle	20120	
45. Lifting Handle Catch	20103	
46. Lifting Chain	20130	
47. Support Chain	20140	
48. Pushbar	20900	25900
49. Lifting Handle Fulcrum	20110	
50. Spring - Support Chain	20105	

* This item not pictured

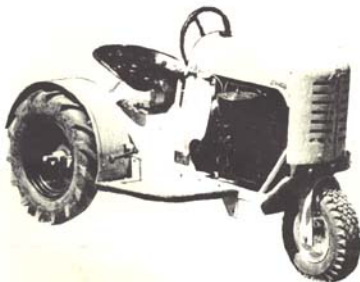
ROTARY MOWER — Underneath Mount

 28"
 #22000

1.	Assy. Deck	22400
2.	Rear Shield	22310
3.	Slideway - Cutter Hsg. (2 reqd.)	22395
4.	Assy. - Cutter Hsg. & Slide	22390
5.	Cutter Hsg. Bearing (2 reqd.)	20452
6.	Cutter Shaft	22320
7.	Cutter Shaft Drive Pulley	22315
8.	Assy. - Belt Tightener Clutch Adj. Bolt	22340
9.	Assy. - Idler Pulley, Brgs. & Shaft	22380
10.	Idler Pulley	22381
11.	Idler Shaft Bearing	8232
12.	Idler Shaft Sleeve	22382
13.	Idler Shaft	22383
14.	Eccentric - Belt Tightener Clutch	22371
15.	Shaft - Belt Tightener Clutch	22355
16.	Shaft Adj. Collar (2 reqd.)	22356
17.	Clutch Shift Hub	22361
18.	Clutch Shift Rod	22362
19.	Shift Knob	5025
20.	Drive Belt	22306
21.	Cutter Bar	22301
22.	Drawbar	22330
23.	Cutter Height Adj. Spacer (2 reqd.)	20492
24.	Retainer	20496
25.	Drawbar Nut (2 reqd.)	20498
26.	Cutter Blade (2 reqd.)	22302
27.	Cutter Bolt (2 reqd.)	20488
28.	Cutter Bolt Nut (2 reqd.)	20487
29.	Engine Driven Pulley (5 HP)	22305
30.	* Engine Driven Pulley (3 HP)	23305
	Tractor Rear Mtg. Brkt.	22304

* This item not pictured

bantamtractor.com

MODEL NO. 9000—9.6 H.P.

Clutch. The 8 h. p. Bantam Tractor is equipped with the Edgement disc type clutch which makes a direct hook-up between the engine and the gear transmission. It is hand operated, engaging and disengaging with light pressure and picking up the load without grab. It locks itself in the engaged position--and is safe--it will not engage or disengage as speed is increased. This clutch is built to take punishment, but do not ride it during operation. Push the shifting lever all the way forward to engage clutch; pull all the way back to disengage.

This clutch has a fine adjustment which is quick and easy to make:

1. Engage clutch, turn over engine by hand until set screw in adjusting collar is accessible.

Disengage clutch in order to free adjusting collar.

2. Loosen the set-screw with a 5/32 in. Allen wrench. Turn collar clockwise to tighten, counter clockwise to loosen. Retighten set-screw. Turn over engine by hand and engage clutch. If clutch will not go all the way forward, adjustment is too tight.
3. For a final test apply the "wall" test as described in the section on the 3 and 5 h. p. tractor clutch.

Individual Rear Wheel Brakes are standard equipment on the 8 h. p. tractor. The brake bands are most easily adjusted by blocking up the tractor and removing the rear wheels.

WARRANTY

Bantam Tractors and Attachments are warranted by Bantam Tractor for 90 days from the date of the original purchase. This warranty provides for the replacement at our factory or authorized service station of all parts manufactured by us that prove unsatisfactory because of defective materials or workmanship.

The engine, clutch, tires and other parts not of our manufacture, are subject to the warranty of their respective manufacturers and are not included here. Bantam Tractor agrees to replace or repair the parts covered by this warranty when shipped to the Bantam factory or service station, freight prepaid.

bantamtractor.com